

# META

at all levels



## Order Catalog Storage Solutions

Product Inventory USA

# META – the Racking Systems Manufacturer

Top Quality Made in Germany

META general



*META has its global head office in Arnsberg in the Sauerland region in the centre of Germany.*

## META Racking Systems

We are a medium-sized company based in Arnsberg Germany – where we are deeply rooted by tradition and by our workforce, the factors which represent the cornerstones of our success.

With an average tenure of 10 years, our employees stay with the company for a long period of time, thus ensuring a high level of specialization in all areas! A good operating environment and our successful employee training and further education program ensure an enduring loyalty to the company.

This benefits our customers as well as our commercial partners.

## Our product range includes:

- Shelving units consisting of bolted or boltless shelving systems
- Wide-span racks
- Pallet racks
- Multi-tier racking systems
- From dynamic storage racks for piece goods and pallets, to automatically operated racking systems
- Drive-in racks
- Cantilever racks

... produced in Germany and stocked in Arnsberg and Atlanta, Georgia.



## META goes USA

At META we have built and refined our core competence in metal working for the past 100 years. Our main products, shelving systems and wide span racks, are “Made in Germany” and are successfully marketed worldwide. A team of experts in Arnsberg, Germany, Atlanta, Georgia and Miami, Florida is available to assist you with your specific needs and questions concerning META products in small, medium and large projects. META products are made from high quality, durable materials and fulfill all relevant industry standards. With a defined product program in stock in our US warehouse you can rest assured that your order(s) will be fulfilled quickly to your specifications

<b>META – Service and Support</b>	4
<b>META – Made in Germany</b>	5
<b>META – Proven Quality</b>	6 – 7
<b>META – Additional Services</b>	8 – 9
<b>Color Chart · Delivery times</b>	
<b>META T&amp;C</b>	10
<b>META CLIP Boltless Shelving</b>	
Variety “based on two components”	11
System description	12 – 13
Examples from an auto parts warehouse	14
META CLIP S3 Boltless Shelving	15 – 19
META CLIP Accessories	20 – 22
META CLIP Tire & Wheel Shelving	23
Case studies	24 – 25
META CLIP Gravity Fed Rack	26 – 27
Case studies	28 – 29
META CLIP Specialized Store Furnishings	30 – 31



## Service & Support

- planning, supply and assembly – all from one source
- one contact partner to speak to, whatever the question may be
- extensive support from our field representatives
- represented in the USA through wholly owned subsidiary
- professional advice from our internal service staff
- comprehensive product range catalog, special information brochures & individual product flyers
- customer-specific product development and improvements
- professional partnership contracts with special conditions & services
- fast and reliable delivery service
- support with in-house exhibitions
- product training



## Made in Germany

We have been involved in metal working processes for more than 100 years. Our products: the clip shelving system, the high-clip shelving systems and our pallet rack systems are produced here and successfully marketed far across the borders of Europe. Our team knows their products and meets the highest quality standards.

META trains its own junior staff and thus lays the foundations for future success. As a company recognized for taking on trainees, Chamber of Commerce Industry (CCI) provides vocational training places for a wide variety of different professions.

With our **"Made in Germany"** quality seal, we don't just want to recruit people. We also feel it is a duty and a requirement to provide you with quality products, both now and in the future.



## The META 5-year warranty

In addition to a **2-year warranty** required by German law, we provide an **extended 5-year quality warranty** on our shelving systems.

### We have confidence in the quality of our products because: ...

- ... we have our products and production processes inspected regularly by our own personnel and by independent inspecting authorities.
- ... structures and production processes have been approved by the GS symbol and the RAL-RG 614 quality label, both important especially in the German market.
- ... we are continuously renewing our production systems and use the very latest production technologies.





## Quality Made by META

Standards don't just mean constraints, but also obligations and safety measures applied within a framework of know-how. The META testing team consists of qualified engineers and technicians. Quality specifications are developed, quality measures are defined and the interaction between individual components is tested in the in-house testing laboratory. The knowledge acquired in this way then forms the basis for subsequent, fully-matured product innovations.

## DIN EN ISO 9001: 2008 certified

META offers you storage facilities of the highest quality, which are produced by machinery using modern PPS and CAD/CAM technologies. As a leader in technology, META is certified to the **DIN EN ISO 9001: 2008** standard for warehousing and operating facilities.

## RAL Certified

**META products are also certified to the strict RAL guidelines.** This means that they are constantly being checked and monitored by an independent inspecting body. And we welcome these independent inspections.

The function of the RAL (German Institute for Quality Assurance and Certification) is to ensure the high quality of products and services. As the umbrella organisation for the present 139 quality associations, only the RAL is allowed to award the quality label in Germany.

## GS Testing & Inspection

Our products, of course, also carry the **GS symbol**, and are regularly checked and inspected by the neutral MPA (materials testing office) in Germany.



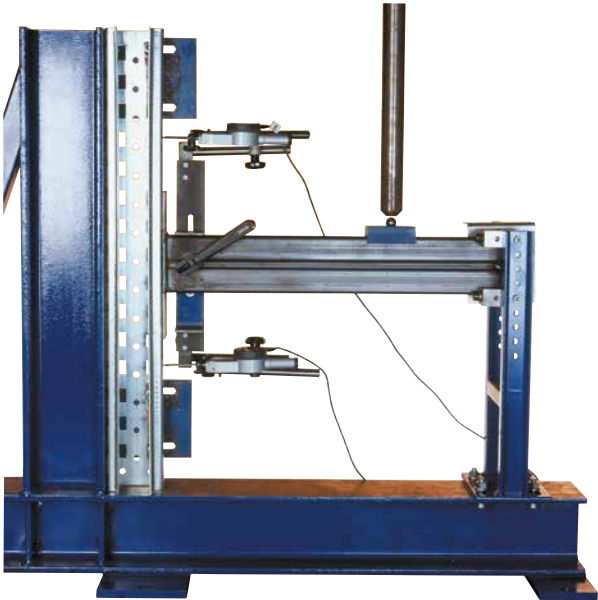


### Health & Safety is a Major Priority

META products meet the **DGUV 108-007** operating safety requirements of the trade and professional associations.

### Qualified as a Specialized Welding Firm

META is a specialized welding firm with Class D manufacturer qualification as defined in **DIN 18800** Part 7. This qualification specifies that META is to use fully mechanized welding procedures (e.g. automatic beam welding machines) in its production process. All welders employed at META have a valid welder's qualification with an EN 287 Standard certificate and a machine operator's qualification with an EN 1418 Standard certificate.



*Beam joint testing at the META test laboratory:  
Start of testing*



## On-Site Advisory Service

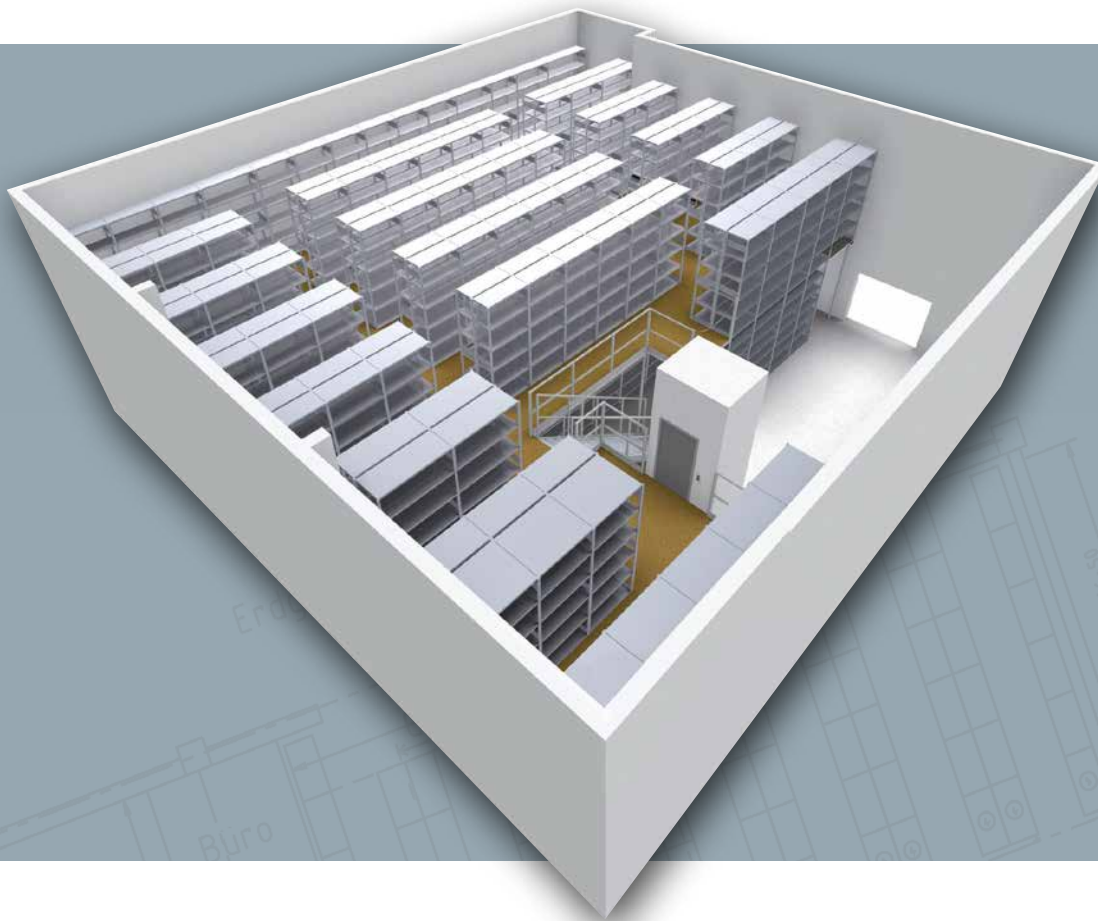
For large projects our trained field service agents can provide rapid and professional on-site advice.

In the different countries, we are represented by branches, distribution partners or subsidiaries.

## Assembly Service

If you don't want to set up your racking systems by yourself, we will be happy to assist you. Our trained installation partners can assemble your storage facility quickly and professionally.





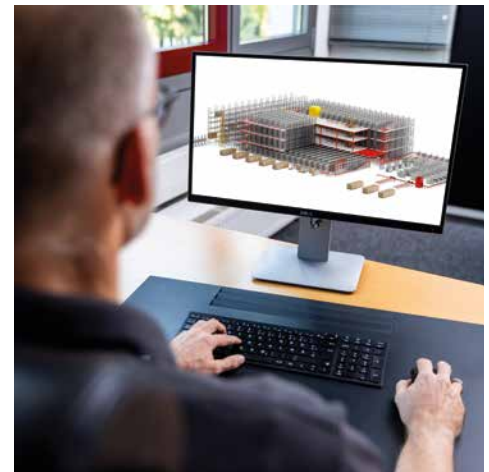
## Planning Service

Consultancy is a major priority at META. We can advise you in selecting the right racking system, or the optimal combination of different systems. To do this, your product structures and storage & picking procedures are inspected on site.

Our employees are well familiar with many trade sectors and can work out individual solutions, with the result that the storage facility is always customized to your requirements.

Our project engineers will be pleased to create a planning proposal for you, with an individual project proposal. With our current drawing programs, we can produce customer-specific CAD drawings.

**Planning, production, supply and assembly – all from one source.**



## Finishes

Please refer to the respective color charts.

For technical reasons related to the printing process, the colors shown may differ from the actual colors.



**Pre-galvanized**



**RAL 7035** · light gray

Subject to differences in color; complaints cannot be accepted. We cannot accept liability for printing errors and deficiencies.

**Our racks are designed for indoor installation only!**

## Prices

For standard items our prices are ex-warehouse in Atlanta, GA. For larger project orders and/or non-standard items our prices are ex-factory in Arnsberg, Germany. For more details, please refer to our general terms & conditions.

## Delivery

Our racks come disassembled and require on-site assembly.



### Assembly

Please use safety gloves to assemble the racks.

## Delivery times

Standard products available from stock. Non-standard items 6-8 weeks.

**This catalog is intended for industry, commerce, trade and business.**

## META General Terms & Conditions

For the general terms and conditions and other current information, please refer to

**[www.meta-online.us](http://www.meta-online.us)**



# META CLIP Boltless Shelving

Variety "based on two components"



Shelving

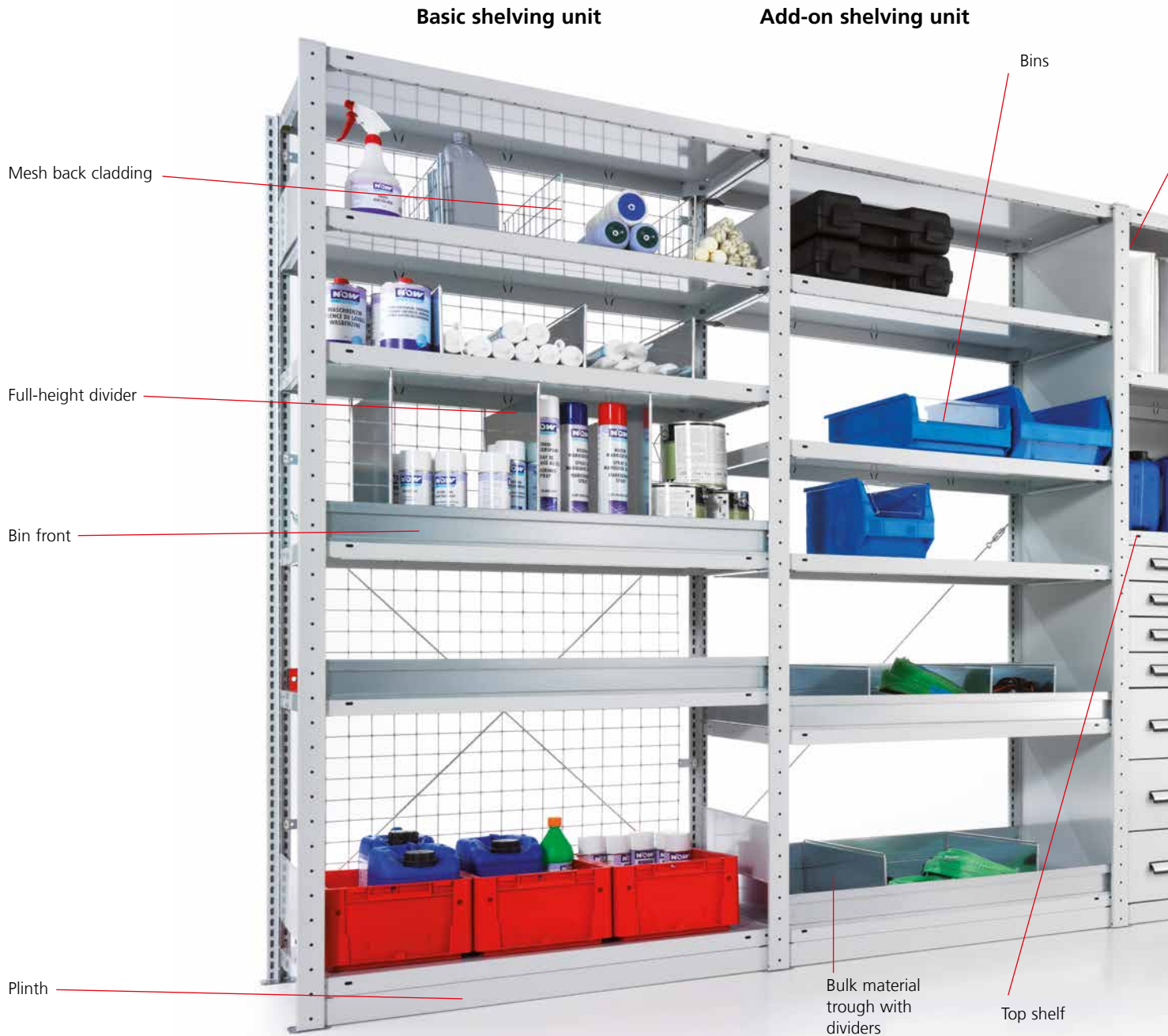
- **multifaceted:** just two building blocks (frame and shelf), can be used to build complex rows of racks for all applications in small parts storage (e.g. spare parts storeroom in industry and small trades, sales store in production-linked trade)
- **easy mounting without screws:**  
quick setup without tools
- **extensive accessories,** see following pages
- **shelf height adjustable in 1" / 25 mm increments**  
for variable adjustment to the size of stored goods
- **shelves with 2" / 50 mm pitch punch holes**  
for attaching shelf dividers or mesh separators
- **sizes:**  
standard rack height: 73", 79", 87", 98"  
standard rack depth: 18", 20", 24"  
standard width: 36", 48"
- **individual shelf loads:** up to 507 lbs<sup>1)</sup>  
**bay loads:** up to 3968 lbs<sup>1) 2)</sup>
- **finish:** Pre-galvanized or additional plastic coating

<sup>1)</sup> with evenly distributed load <sup>2)</sup> bay load data apply to rows of racks in 3 or more bays

# META CLIP Boltless Shelving

## System description

Shelving



## Frame Versions – Completely Disassembled or Pre-Assembled (Clinched)

**Completely disassembled frame = META CLIP S3**  
– cost efficient version, quick mounting without tools!



# META CLIP Boltless Shelvinl

System description



## Shelving versions



Single-row shelving



Double-row shelving

Shelving

## Mounting Versions – Shelf Clips + Diagonal Bracing Struts or Beams

### Mounting with shelf clips + diagonal bracing struts



Shelf clip



Longitudinal reinforcer with back sway braces

### Boltless mounting with bracing beams:

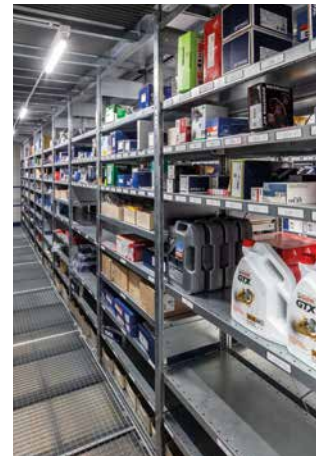
Can be used with boltless racks with access from either side



# META CLIP Boltless Shelving

Sample installation in an auto parts warehouse

Shelving



# META CLIP Boltless Shelving

Articles with disassembled S3 Frames & back sway braces



- **cost efficient META CLIP S3 boltless shelving with disassembled frame** for shelf loads of 507 lbs / 230 kg
- **quick boltless mounting without tools**
- **shelf height adjustable in 1 inch increments** for variable adjustment to the size of stored goods

- **edge height:** 507 lbs / 230 kg shelves: 2" / 40 mm
- **note:** for technical reasons, side sway braces are always galvanized, even on plastic-coated versions 331 and 507 lbs / 150 and 230 kg shelves with holes: all accessories can be mounted

**!** **Planning dimensions & load data**

**Basic rack unit:** Nom. width + 2.2" / 56 mm  
Nom. depth + 1.4" / 36 mm

**Add-on rack unit:** Nom. width + 0.2" / 6 mm  
Nom. depth + 1.4" / 36 mm

**Bay load:** up to 3042 lbs / 1,380 kg

**Shelf load:** from 176 to 507 lbs / from 80 to 230 kg

**Note on safety:**  
Racks should be secured to prevent tilting (please refer to Page 22 for wall/floor anchoring). The shelf/bay loads apply to evenly distributed loads. Bay loads apply to rows of racks in 3 or more bays. Top shelf 441 lbs max.

# META CLIP S3 Boltless Shelving · QUICK SHIP

Articles with disassembled S3 Frames & back sway braces

Boltless shelving system META CLIP 230 S3 · Shelf load 507 lbs · Height 73 inch

	USA				Germany				Number of shelves	Basic rack unit Item No.	Add-on rack unit Item No.	Additional shelf Item No.
	Height inch	Width inch	Depth inch	Bay load lbs	Height mm	Width mm	Depth mm	Bay load kh				
Galvanized	73	36	18	2425	1850	900	450	1100	5	361823073S	361823073A	S3618230
	73	36	20	2425	1850	900	500	1100	5	362023073S	362023073A	S3620230
	73	48	24	2425	1850	900	600	1100	5	362423073S	362423073A	S3624230
	73	48	12	2425	1850	1200	300	1100	5	481223073S	481223073A	S4812230
	73	48	16	2425	1850	1200	400	1100	5	481623073S	481623073A	S4816230
	73	48	18	2425	1850	1200	450	1100	5	481823073S	481823073A	S4818230
	73	48	20	2425	1850	1200	500	1100	5	482023073S	482023073A	S4820230
73	48	24	2425	1850	1200	600	1100	5	482423073S	482423073A	S4824230	

Boltless shelving system META CLIP 230 S3 · Shelf load 507 lbs · Height 79 inch



	USA				Germany				Number of shelves	Basic rack unit Item No.	Add-on rack unit Item No.	Additional shelf Item No.
	Height inch	Width inch	Depth inch	Bay load lbs	Height mm	Width mm	Depth mm	Bay load kg				
Galvanized	79	36	18	2425	2000	900	450	1100	5	361823079S	361823079A	S3618230
	79	36	20	2425	2000	900	500	1100	5	362023079S	362023079A	S3620230
	79	36	24	2425	2000	900	600	1100	5	362423079S	362423079A	S3624230
	79	48	18	2270	2000	1200	450	1030	5	481823079S	481823079A	S4818230
	79	48	20	2270	2000	1200	500	1030	5	482023079S	482023079A	S4820230
	79	48	24	2270	2000	1200	600	1030	5	482423079S	482423079A	S4824230



# META CLIP S3 Boltless Shelving · QUICK SHIP



Articles with disassembled S3 frames & back sway braces

Boltless shelving system META CLIP 230 S3 · Shelf load 507 lbs · Height 87 inch

									Number of shelves	Basic rack unit Item No.	Add-on rack unit Item No.	Additional shelf Item No.
	Height inch	Width inch	Depth inch	Bay load lbs	Height mm	Width mm	Depth mm	Bay load kg				
<b>Galvanized</b>	87	36	18	3042	2200	900	450	1380	5	361823087S	361823087A	S3618230
	87	36	20	3042	2200	900	500	1380	5	362023087S	362023087A	S3620230
	87	36	24	3042	2200	900	600	1380	5	362423087S	362423087A	S3624230
	87	48	18	3042	2200	1200	450	1380	5	481823087S	481823087A	S4818230
	87	48	20	3042	2200	1200	500	1380	5	482023087S	482023087A	S4820230
	87	48	24	3042	2200	1200	600	1380	5	482423087S	482423087A	S4824230

Shelving

Boltless shelving system META CLIP 230 S3 · Shelf load 507 lbs · Height 98 inch

									Number of shelves	Basic rack unit Item No.	Add-on rack unit Item No.	Additional shelf Item No.
	Height inch	Width inch	Depth inch	Bay load lbs	Height mm	Width mm	Depth mm	Bay load kg				
<b>Galvanized</b>	98	36	18	3042	2500	900	450	1380	6	361823098S	361823098A	S3618230
	98	36	20	3042	2500	900	500	1380	6	362023098S	362023098A	S3620230
	98	36	24	3042	2500	900	600	1380	6	362423098S	362423098A	S3624230
	98	48	18	3042	2500	1200	450	1380	6	481823098S	481823098A	S4818230
	98	48	20	3042	2500	1200	500	1380	6	482023098S	482023098A	S4820230
	98	48	24	3042	2500	1200	600	1380	6	482423098S	482423098A	S4824230



# META CLIP Accessories

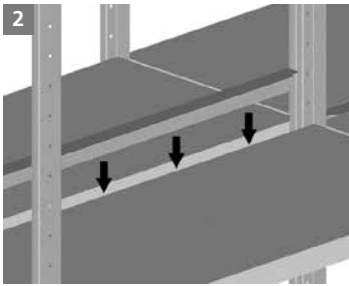
Range of components / boltless shelf general accessories

Shelving



1 Frame variants, clinched version\*, without bases, without top caps

🇺🇸		🇩🇪		1	Plain frame galvanised	1	Plain frame RAL 7035 light grey
Height inch	Depth inch	Height mm	Depth mm		Item No.		Item No.
79	18	2000	450		<b>186141</b>		<b>186142</b>
79	20	2000	500		<b>9909</b>		<b>65869*</b>
79	24	2000	600		<b>9912*</b>		<b>63404*</b>



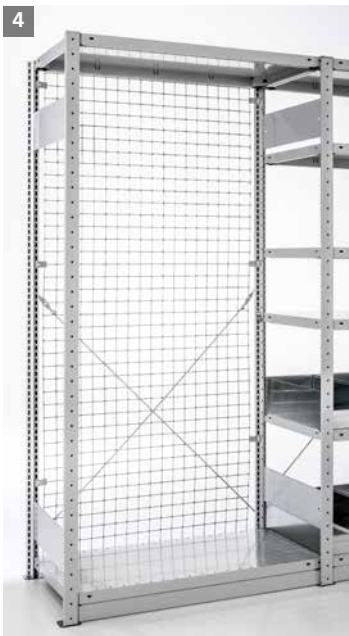
2 Infill strip

Description	🇺🇸	🇩🇪	galvanised Item No.
	Width inch	Width mm	
for use on double racks only!	36	914	???
Possible with bracing beam only!	48	1219	???



3 Shelf divider, free-standing, galvanised · (depth 32" / 800 mm without clip)

🇺🇸		🇩🇪		galvanised Item No.
Height inch	Depth inch	Height mm	Depth mm	
6	18	150	450	<b>91034</b>
6	24	150	600	<b>95958</b>



4 META QUICK back panel, mesh panel, version incl. mounting material

🇺🇸		🇩🇪		galvanised Item No.
Height inch	Width inch	Height mm	Width mm	
79	36	2000	900	<b>CB7936</b>
83	36	2500	900	<b>CB9836</b>
79	48	2000	1200	<b>CB7948</b>
83	48	2500	1200	<b>CB9848</b>

Range of components / boltless shelf general accessories

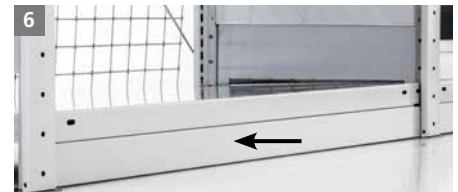
**5** Bin front incl. mounting material · can be mounted one over the other

🇺🇸		🇩🇪		galvanised Item No.
Height inch	Width inch	Height mm	Width mm	
3	36	75	900	<b>186126</b>
3	48	75	1200	<b>186127</b>



**6** Base Strips / Plinth

Description	🇺🇸		🇩🇪		galvanised Item No.
	Height inch	Width inch	Height mm	Width mm	
Required as bottom limiter and for stabilisation if installing drawers	2	36	56	900	???
	2	48	56	1200	???



**7** Floor fixing kit

Description	galvanised Item No.
quantity required: 4 pieces for basic unit, 2 pieces for add-on unit	<b>80051</b>



Shelving

# META CLIP Tire & Wheel Shelving

## Case studies

Shelving



# META CLIP Tire & Wheel Shelving

Case studies

Shelving



# META QUICK S3 Gravity Fed Rack

Boltless gravity fed racks complete with mesh dividers

Shelving



- META CLIP S3 Rack system **with unassembled frame**, provides particularly high stability and load capacity, shelf load 441 lbs / 200 kg on each level
- Particularly suitable for cardboard packed goods, e.g. packets of screws or small parts kept in small storage boxes
- **Quick boltless mounting without tools**
- **6 mesh dividers per shelf are included in the delivery:** the mesh dividers allow tracks to be inserted in steps of 2" / 50 mm depending on the size of the stored goods, and can be adapted at any time
- **Shelf height** adjustable in 1" / 25 mm increment
- Includes top shelf for dust protection and additional storage space
- Easier access to the stored goods
- Optimal monitoring of stock levels: It is immediately obvious where stock replenishments are required
- Stored goods such as cartons slide down automatically to the take-out side; 14° angle

**! Planning dimensions & load data**

**Single-row rack:**

**Basic rack unit:** Nom. width + 2.2" / 56 mm  
Nom. depth + 1.4" / 36 mm

**Add-on rack unit:** Nom. width + 0.2" / 6 mm  
Nom. depth + 1.4" / 36 mm

**Double-row rack:**

**Basic rack unit:** Nom. width + 2.2" / 56 mm  
2 x nom. depth + 3" / 75 mm

**Add-on rack unit:** Nom. width + 0.2" / 6 mm  
2 x nom. depth + 3" / 75 mm

**Bay load:** 3086 or 3968 lbs / 1.400 or 1.800 kg (see table)

**Shelf load:** 441 lbs / 200 kg

**Note on safety:**  
Racks should be secured to prevent tilting (for wall or floor fixings, see Page 22). The shelf/bay loads apply to evenly distributed loads. Bay load data apply to rows of racks in 3 or more bays.

META CLIP Gravity Fed rack · with mesh shelf dividers · shelf load 441 lbs

	🇺🇸			Bay load lbs	🇩🇪			Bay load kh	Number of shelves	Single-sided rack	
	Height inch	Width inch	Depth inch		Height mm	Width mm	Depth mm			Basic rack unit Item No.	Add-on rack unit Item No.
<b>Galvanized</b>	79	36	18	???	2000	900	500	1800	8	<b>GF362023079S</b>	<b>GF362023079A</b>
	79	48	24	???	2000	1200	500	1800	8	<b>GF482023079S</b>	<b>GF482023079A</b>

# META CLIP Gravity Fed Rack

Case studies



Shelving

# Project reference

Elektro Schröder, Gütersloh



- **Sector:** e-commerce
- **Customer:** Elektro Schröder
- **Products:** Items from the area of electrotechnical systems, building automation, data network technology, photovoltaic systems, fire alarm systems and switchgear engineering
- **Assignment/aim:**

The company belongs to the Elektro Beckhoff Group and is therefore also active beyond the city limits of Gütersloh. The relocation and new construction within the city became necessary because the capacities at the old location were limited. A spacious office building with an adjoining central warehouse has been built at James-Watt-Straße in Gütersloh.

The wide range of stored goods resulted in a wide variety of requirements for the new storage facility, for which Elektro Schröder relied on the expertise of the Arnsberg-based storage specialist META-Regalbau via its sales partner Sonepar. The aim was to provide customised and flexible storage for a wide variety of groups of items.
- **Solution:**

Because of the different stored goods, the Arnsberg-based storage technology expert META used different system solutions for the respective areas. For (small) parts storage in the order-picking area, the META QUICK boltless shelving system with a total of almost 1,200 shelves was installed, ensuring clear and flexible storage of a wide variety of products at all times. Due to the open arrangement of the aisles and the corresponding positioning of the fast-moving items, short walking distances and therefore a more efficient order picking are achieved.

On the sides, special pole shelving systems were installed. These special shelving systems based on the META QUICK system are ideal for the horizontal storage of long goods. At Elektro Schröder, items such as sensitive LED tubes and cable ducts made of plastic find their perfect place there.

Likewise, due to the two-tier design of the multi-tier shelving system and the installed pallet gate, larger goods such as switch cabinets for construction sites as well as other palletised goods can be stored in the open space on the second level. The space resources were utilised in an intelligent manner, as the second tier is also directly connected to the administrative wing via a passage.

The service counter out in front, based on the META QUICK shelving system, forms a spatial closure and an optimal option for handing out the required items.

In the rear part of the new central warehouse, the META MULTIPAL system is additionally used to store heavy items and various palletised goods. For upright storage and quick access to plastic pipes and metal cable trays, one side of the shelving is set up accordingly and equipped, among other things, with special separating arms.

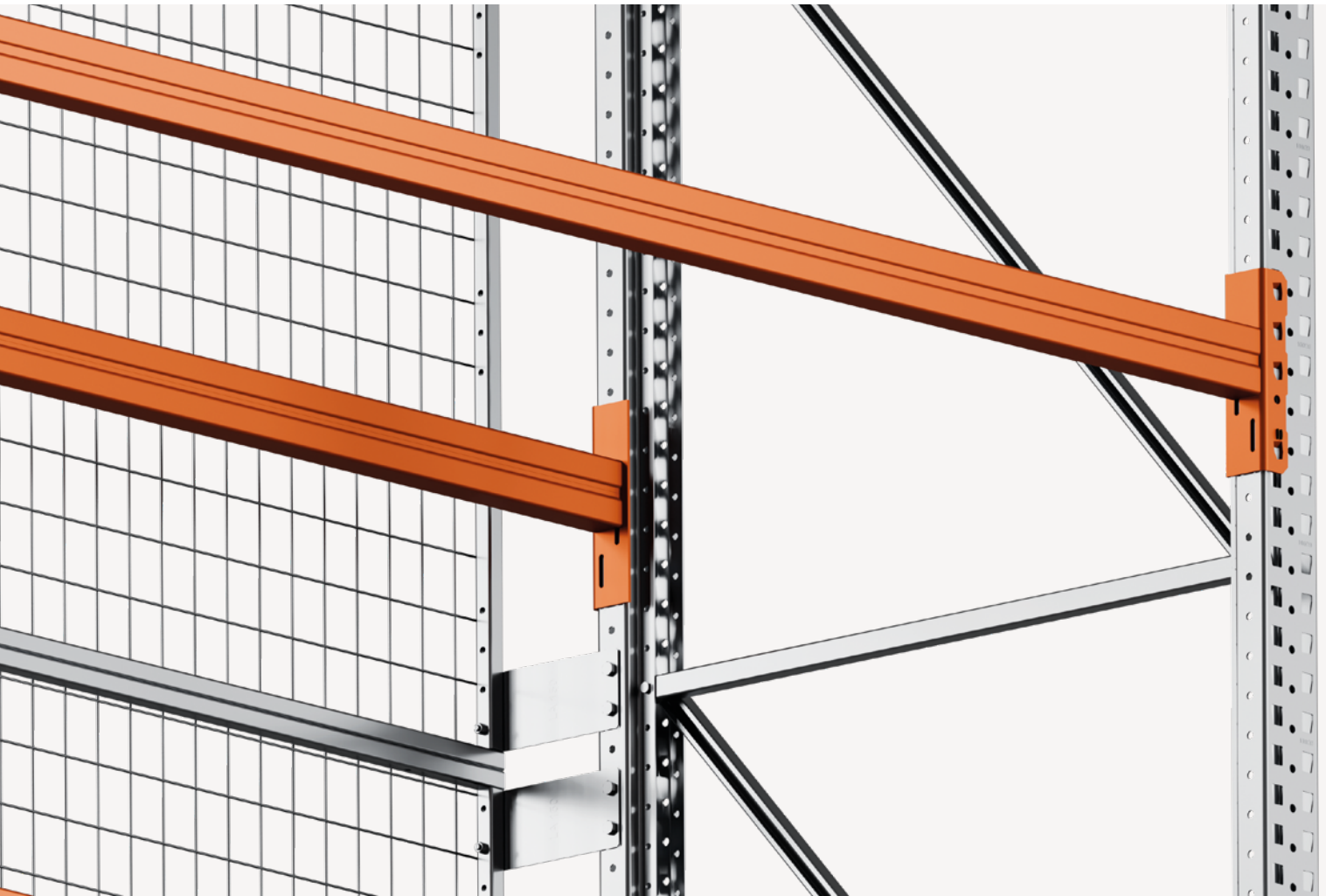
A special version of the META MULTIPAL system was installed as an important element of the overall storage solution to store the heavy cable reels. On the levels of this cable reel rack, the reels hang on special cable reel axles in the rack so that a precisely fitting picking of the different types of cables is possible. This way, up to 25 cable reels can be stored ready for picking at Elektro Schröder at the same time. Additional cable reels then find their place in the adjacent pallet rack.

... tailor-made storage solution



# META

at all levels



**META Storage Solutions Inc.**

2220 Northmont Pkwy Ste 250  
Duluth, GA 30096-3607

Phone: 1-866-405-4291

Fax: 1-855-253-1664

E-Mail: [info@meta-online.us](mailto:info@meta-online.us)

**META Storage Solutions Inc.**

1801 NE 123rd St, Suite 314  
North Miami, FL 33181

Phone: 1-786-899-4419

Fax: 1-786-780-2101

E-Mail: [info@meta-online.us](mailto:info@meta-online.us)

[www.meta-online.com](http://www.meta-online.com)

